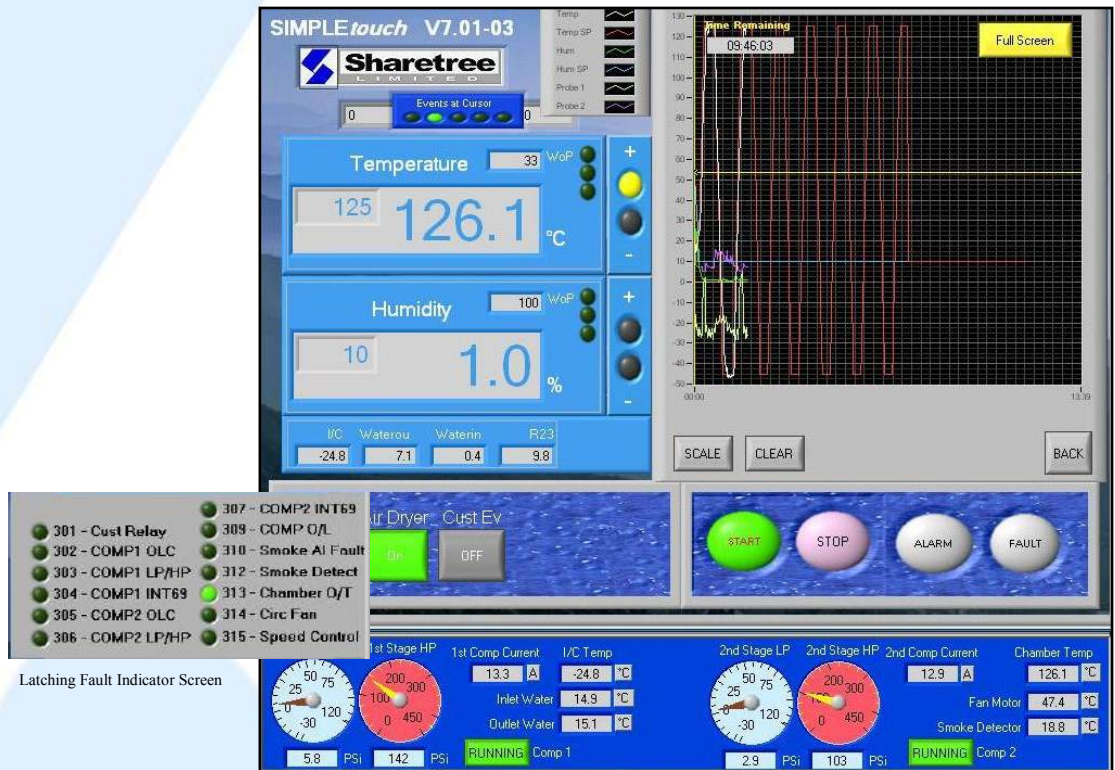


SIMPLEtouch

SIMPLEtouch Programmer (now standard on most Sharetree chambers)



Main SIMPLEtouch display with optional diagnostic display below

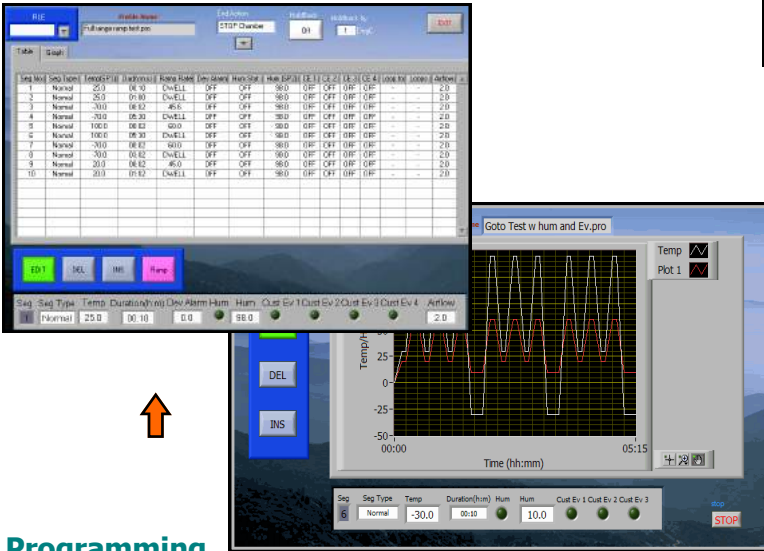
- User friendly interface, Windows O/S based
- **QuikSet** Temperature and Humidity entry
- Clear, easy-to-read **7" display** (upgradable)
- **Comprehensive Graphical Display**
- **Complex programs**
- **Logging of results to file** (.csv format)
- **LAN and USB access**
- **Remote Monitoring or Control via MODbus I/F**
- **Latching Fault Indicator Screen***
- **Diagnostic Screen***

*on larger chambers

Overview

The Sharetree **SIMPLEtouch** Chamber Programmer enables the temperature (and humidity where fitted) to be easily programmed and displayed on Sharetree test chambers. The touch-screen window gives a clear, user-friendly interface with a constantly updated display of the current set and actual values for temperature and humidity. The standard 7" display can be upgraded to a desktop PC size if required, giving enhanced graphical capability. A Full Screen mode is also available.

SIMPLEtouch uses only commercially available components to ensure low cost of ownership over the lifetime of the chamber.

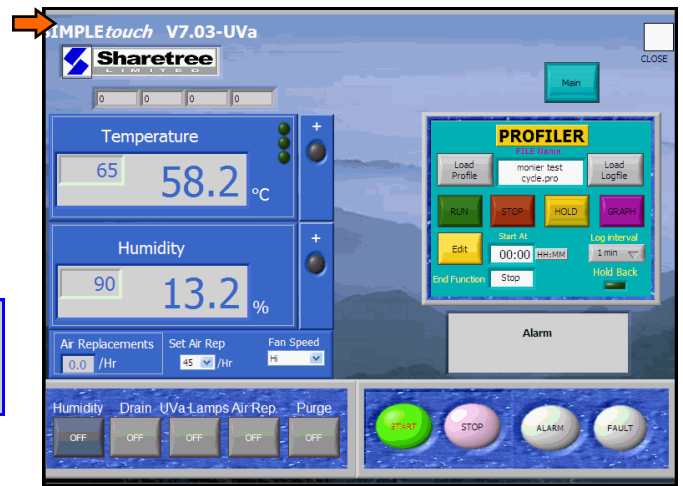


Programming

The Profile Editor allows the user to quickly generate or edit programs (off-line, if preferred) to control the chamber. Each profile is made of segments that hold the temperature/humidity, time values and customer event status. Ramp rates may be entered directly or as time-to-temperature. "Hold-back" can also be used, to ensure temperatures are reached before dwelling. An unlimited number of segments may be used, with Deviation alarms settable by segment.

Complex profiles can be quickly programmed using the loop-back facility, including nested loops. A large range of profiles can be stored on the Chamber Programmer. At the end of the program an "End" function can be used to dwell at a fixed temperature or to stop the chamber.

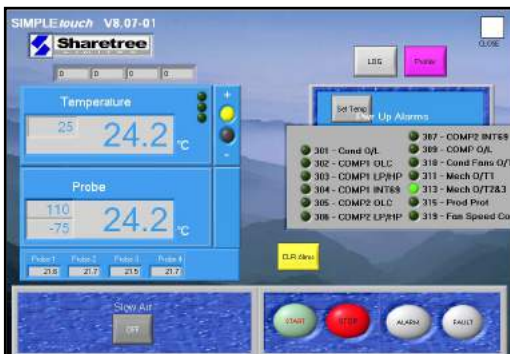
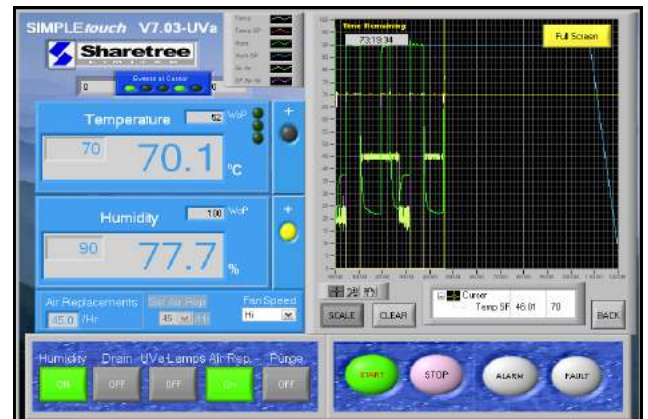
When running a profile on the **SIMPLEtouch** Chamber Programmer the total time remaining is displayed, a Hold function allows manual intervention and a Start At function allows the profile to be started mid run. The graph displays the complete profile and the recorded temperature/humidity so far.



Graphs and Logging

The **SIMPLEtouch** Chamber Programmer has a comprehensive graphing facility for set and recorded actual readings including auto-scaling, zoom in/out, expand area and a cursor to check specific values on the graph. There is also a visual display of event statuses at the cursor position (i.e. Hum On/Off, Customer Event On/Off). The graphs may be displayed in Full Screen mode.

The data (including deviation alarm status) for both profiles and normal running can be logged to a .csv file (at adjustable intervals) and retrieved for viewing either on the **SIMPLEtouch** Programmer or in external software such as MS Excel. Inputs from up to 5 floating probes (optional) may be displayed and logged.



Faults are quickly and easily identified on the latching alarm screen and logged for later analysis.

Communications (inc. MODbus Interface)

The **SIMPLEtouch** Chamber Programmer can be remotely monitored or driven via its standard MODbus interface over TCP-IP (LAN) or RS232.

All chambers are fitted with a LAN & USB interfaces as standard.



Sharetree Limited
Units D&E Stonedale Road
Oldends Industrial Estate
Stonehouse, GL10 3SA

Tel: +44 1453 828 642
Email: sales@sharetree.co.uk
www.sharetree.co.uk

Sharetree products are designed, manufactured and supported in the UK



fsb^{co}
MEMBER

